

Mullion Super Bright End Column Glass Door Lighting

Specifications:

Description: This luminaire "End Column" glass door lighting is ideal for refrigerated or freezer display case lighting applications. The "end column" mullion is designed to mount onto the door frame ends and projects the light beam to either the right and left sides of the glass doors.

Features:

Lighting: Solid state lighting (SSL) LEDs; surface mounted device (SMD) populated onto a printed 2 layer, 2 oz circuit board (PCB)

Tube and endcaps: polycarbonate LEXAN 244R

LED Driver Input: 100 VAC to 277 VAC; use only Class 2 UL listed or UL recognized LED driver

LED Driver Output: 12 or 24 VDC

Light Beams: Can be ordered to project light at 15° or 30°; use 15° when products are 6" or closer to the door; use 30° when products are over 6" away from the door

Life: Long life with L70 > 50,000hrs

Temperature Ratings: Lens and End Cap: PCB (LEDs, etc): Ambient: -25° C~45°C; Case: -25°C~70°C; UL 2108 testing: 25°C

Warranty: 5 year limited warranty from manufacturing defects

Safety: All our luminaires are UL/cUL Listed

Certifications: ISO 9001:2015 certified



Options:

Brightness: General Purpose or Super Bright

Voltage: 12 or 24 VDC

Lengths: 25", 47", 58" or 69" standard lengths; additional lengths available for 12V models

Color: Standard CCTs choices are 3000K, 3500K, 4000K, and 5000K with a CRI >90

Lens / Tube: Clear or frosted

Wattage and Lumens:

Super Bright 3250 model:

Length	Wattage	Lumens
25"	5 W	678 lm
47"	10 W	1356 lm
58"	12.6 W	1698 lm
69"	15 W	2038 lm

General Purpose 1665model:

Length	Wattage	Lumens
25"	3.28 W	457 lm
47"	6.56 W	914 lm
58"	8.20 W	1143 lm
69"	9.84 W	1371 lm

*Lumens are estimate and based on 24V, 40K PCB, clear lens

*Please note that additional lengths are available in 12V

*Wattage usage is same for 12V and 24V

UL Test Data:

Our custom-built mullion light series has over 512 variations that affect performance data. Please see call us at 623-248-6232 and talk to one of technicians for UL electrical, integrating sphere and distribution data.

How To Create a Part Number:

Series	Voltage options	Length Options	Color (CCT) options	Side options	Lens Options	Projection of Light angle options
MM1R-3250 Or MM1R-1665	12V or 24V	25", 47", 58" or 69"	30K 35K 40K 50K	Left or Right	Clear (C) or Frosted (F)	15° or 30°

Example part number: MM1R-3250-12V-47-40K-L-F-15

Accessories:

Brackets: See next page

Drivers: See Driver Spec Sheet

Jumpers: See next page

Harnesses: See next page



Brackets:

Feature: Metal snap-in or Polycarbonate LEXAN 244R snap-in

Ordering Tips:

Order in quantities of 2 for a smaller single luminaires or 20 for larger projects.

We recommend our brackets are used 4-6" from each end for luminaires 24" or shorter; also one every 24" for longer luminaires.

Brackets Part Numbers:

Description	Quantity	Part Number
Metal	2	O-BRK-MIN-M-2
	20	O-BRK-MIN-M-20
Polycarbonate	2	O-BRK-MIN-P-2
	20	O-BRK-MIN-P-20



Jumpers:

Features:

Polarized for direct 12v or 24v DC power supply

18/2 AWG (18 gauge wire / 2 wires parallel)

Wire rated at 105 °C ; Molded ends are rated at 90°C

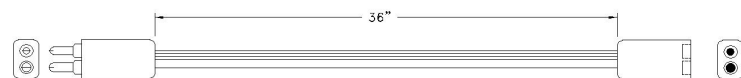
Available in black

Available in lengths: 5" , 24" , 36" and 48"

Jumpers come in the following variations: Female / Male; Female / Stripped; Male / Stripped

Jumpers Part Numbers:

Part Number	Description	Length	Color
M-J-05-F-SE-P	5" Jumper, Female, Striped End, Polarized	5"	Black
M-J-05-M-SE-P	5" Jumper, Male, Striped End, Polarized	5"	Black
M-J-24-F-SE-P	24" Jumper, Female, Striped End, Polarized	24"	Black
M-J-24-M-SE-P	24" Jumper, Male, Striped End, Polarized	24"	Black
M-J-36-F-M-P	36" Jumper, Female, Male,	36"	Black
M-J-48-F-M-P	48 Jumper, Female, Male,	48"	Black
M-J-48-F-SE-P	48" Jumper, Female, Striped End, Polarized	48"	Black



Harnesses :

Features:

Polarized for direct 12v or 24v DC power supply

18/2 AWG (18 gauge wire / 2 wires parallel)

Wire rated at 105 °C ; Molded ends are rated at 90°C

Available in black

Available in lengths: 5" , 24" , 36" and 48"

Harnesses Part Numbers:

Kit Part Number	Description	Length	Color
MMH-1D-1R-1L	One MMH-36-2F-1M-P + One M-J-36-F-M-P	36"	Black
MMH-2D-1R-1L	Two MMH-36-2F-1M-P + One M-J-36-F-M-P	36"	Black
MMH-2D-1C-1R-1L	Three MMH-36-2F-1M-P + One M-J-36-F-M-P	36"	Black
MMH-3D-2C-1R-1L	Four MMH-36-2F-1M-P + One M-J-36-F-M-P	36"	Black
MMH-4D-3C-1R-1L	Five MMH-36-2F-1M-P + One M-J-36-F-M-P	36"	Black
MMH-5D-4C-1R-1L	Six MMH-36-2F-1M-P + One M-J-36-F-M-P	36"	Black

