

Brackets Options for Micro-Mini (0.63" width) Luminaires

Description:

LEDingEdge provides a wide variety of mounting options. Our metal, polycarbonate, magnet, rotating and acrylic brackets allow for easy installation, removal and cleaning.

Options / Features:

Polycarbonate: snap-in bracket; can be installed with one #4, 3/8" wood screw or 1/8" flush mount rivet.

Rotating: polycarbonate rotating mount brackets allows the light beam to be directed precisely to desired location. The unique ratcheting design securely holds the light angle desired; install with two #6, 3/8" (or 1/2" if metal surface) wood screws or 1/8" flush mount rivets.

Magnet: strong "rare earth" magnet with snap-in bracket; eliminates need for drilling mounting holes; NSF approved.

Ordering Tips:

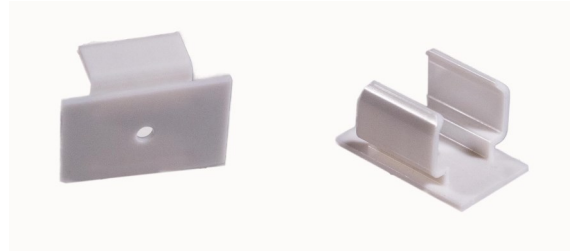
Order in quantities of 2 for a smaller single luminaires or 20 for larger projects.

We recommend our brackets are used 4-6" from each end for luminaires 24" or shorter; also add one every 24" for longer luminaires.

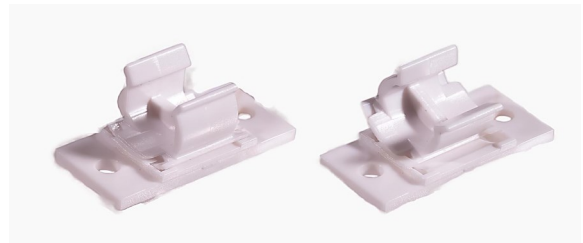
Part Numbers:

Bracket	Quantity	Part Number
Polycarbonate	2	O-BRK-MIC-P-2
	20	O-BRK-MIC-P-20
Rotating	2	O-BRK-MIC-R1-2
	20	O-BRK-MIC-R1-20
Magnet	2	O-BRK-MIC-P-MAG-2
	20	O-BRK-MIC-P-MAG-20

Polycarbonate



Rotating



Magnetic

