

## Bracket Options for Mini (0.81" width) Luminaires

### Description:

LEDingEdge provides a wide variety of mounting options. Our metal, polycarbonate, magnet, rotating and acrylic brackets allow for easy installation, removal and cleaning.

### Bracket Options / Features:

**Metal:** nickel plated snap-in brackets; can be mounted with one #6, 3/8" wood screw (or self-tapping screw for metal surface) or 1/8" flush mount rivet. This bracket is NSF certified.

**Polycarbonate:** snap-in bracket; can be installed with one #4, 3/8" wood screw or 1/8" flush mount rivet.

**Rotating:** polycarbonate rotating mount brackets allows the light beam to be directed precisely to desired location. The unique ratcheting design securely holds the light angle desired; install with two #6, 3/8" (or 1/2" if metal surface) wood screws or 1/8" flush mount rivets.

**Magnet:** strong "rare earth" magnet with snap-in bracket; eliminates need for drilling mounting holes.

**Acrylic:** clear bracket fits over luminaire; mounted with two #4, 3/8" wood screws or 1/8" flush mount rivets.

### Ordering Tips:

Order in quantities of 2 for a smaller single luminaires or 20 for larger projects.

We recommend our brackets are used 4-6" from each end for luminaires 24" or shorter; also add one every 24" for longer luminaires.

### Part Numbers:

Bracket	Quantity	Part Number
Metal	2	O-BRK-MIN-M-2
	20	O-BRK-MIN-M-20
Polycarbonate	2	O-BRK-MIN-P-2
	20	O-BRK-MIN-P-20
Rotating	2	O-BRK-MIN-R1-2
	20	O-BRK-MIN-R1-20
Magnet	2	O-BRK-MIN-P-MAG-2
	20	O-BRK-MIN-P-MAG-20
Acrylic	2	O-BRK-MIN-A-2
	20	O-BRK-MIN-A-20

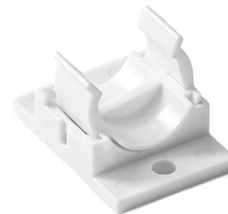
### Metal



### Polycarbonate



### Rotating



### Magnetic



### Acrylic

