

Specifications:

Description: This luminaire “End Column” glass door lighting is ideal for refrigerated or freezer display case lighting applications. The “end column” mullion is designed to mount onto the door frame ends and projects the light beam to either the right and left sides of the glass doors.

Features:

Lighting: Solid state lighting (SSL) LEDs; surface mounted device (SMD) populated onto a printed 2 layer, 2 oz circuit board (PCB)

Tube and endcaps: polycarbonate LEXAN 244R

LED Driver Input: 100 VAC to 277 VAC; use only Cass 2 UL listed or UL recognized LED driver

LED Driver Output: 12 or 24 VDC

Light Beams: Can be ordered to project light at 15° or 30°; use 15° when products are 6” or closer to the door; use 30° when products are over 6” away from the door

Life: Long life with L70 > 50,000hrs

Temperature Ratings: Lens and End Cap: PCB (LEDs, etc): Ambient: -25°C~45°C; Case: -25°C~70°C; UL 2108 testing: 25°C

Warranty: 5 year limited warranty from manufacturing defects

Safety: All our luminaires are UL/cUL Listed

Certifications: ISO 9001:2015 certified



UL Integrating Sphere Test Data:

Voltage	Length (in)	CCT (K) Nom.	Left or Right	Lens	Angle of light	CRI	CCT (K) Actual	Lumens (lm)	Power (W)	Efficacy (lm/W)
24	47	30K	Left	Frosted	15	92.9	3016	1135	9.653	117.6

Our custom-built mullion light series has 256 variations that affect performance data. Above is the data from one of the many UL tests we have conducted. Please contact us if you require specific data for other unique custom-built light fixtures.

How To Create a Part Number:

Series	Voltage options	Length Options	Color (CCT) options	Side options	Lens Options	Projection of Light angle options
MM1R-3250	12V or 24V	25”, 47”, 58” or 69”	30K 35K 40K 50K	Left or Right	Clear (C) or Frosted (F)	15° or 30°

Example part number: MM1R-3250-12V-47-40K-L-F-15

Options:

Color: Standard CCTs choices are 3000K, 3500K, 4000K, and 5000K with a CRI >90

Lens / Tube: Clear or frosted

Ends: Left or Right side

Length: 25”, 47”, 58” or 69”

Voltage: 12 or 24 VDC

Projection of Light: 15 or 30°

Accessories:

Brackets: See next page

Drivers: See Driver Spec Sheet

Jumpers: See next page

Harnesses: See next page



Brackets:

Feature: Metal snap-in or Polycarbonate LEXAN 244R snap-in

Ordering Tips:

Order in quantities of 2 for a smaller single luminaires or 20 for larger projects.

We recommend our brackets are used 4-6" from each end for luminaires 24" or shorter; also one every 24" for

Brackets Part Number and Prices:

Description	Quantity	Part Number	Price
Metal	2	O-BRK-MIN-M-2	\$2.50
	20	O-BRK-MIN-M-20	\$25.00
Polycarbonate	2	O-BRK-MIN-P-2	\$3.00
	20	O-BRK-MIN-P-20	\$30.00



Jumpers:

Features:

Polarized for direct 12v or 24v DC power supply
18/2 AWG (18 gauge wire / 2 wires parallel)

Wire rated at 105 °C ; Molded ends are rated at 90°C

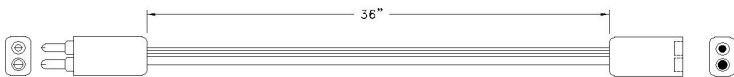
Available in black

Available in lengths: 5" , 24" , 36" and 48"

Jumpers come in the following variations: Female / Male; Female / Stripped; Male Stripped.

Jumpers Part Number and Prices:

Description	Length	Color	Part Number	Price
5" Jumper, Female, Striped End, Polarized	5"	Black	M-J-05-F-SE-P	\$4.90
5" Jumper, Male, Striped End, Polarized	5"	Black	M-J-05-M-SE-P	\$4.90
24" Jumper, Female, Striped End, Polarized	24"	Black	M-J-24-F-SE-P	\$5.50
24" Jumper, Male, Striped End, Polarized	24"	Black	M-J-24-M-SE-P	\$5.50
36" Jumper, Female, Male, Polarized	36"	Black	M-J-36-F-M-P	\$6.70
48 Jumper, Female, Male, Polarized	48"	Black	M-J-48-F-M-P	\$8.00
48" Jumper, Female, Striped End, Polarized	48"	Black	M-J-48-F-SE-P	\$6.70
48" Jumper, Male, Striped End, Polarized	48"	Black	M-J-48-M-SE-P	\$6.70



Harnesses :

Features:

Polarized for direct 12v or 24v DC power supply
18/2 AWG (18 gauge wire / 2 wires parallel)

Wire rated at 105 °C ; Molded ends are rated at 90°C

Available in black

Available in lengths: 5" , 24" , 36" and 48"

Harnesses Part Number and Prices:

Description	Length	Color	Kit Part Number	Price
One MMH-36-2F-1M-P + One M-J-36-F-M-P	36"	Black	MMH-1D-1R-1L	\$15.20
Two MMH-36-2F-1M-P + One M-J-36-F-M-P	36"	Black	MMH-2D-1R-1L	\$23.70
Three MMH-36-2F-1M-P + One M-J-36-F-M-P	36"	Black	MMH-2D-1C-1R-1L	\$32.30
Four MMH-36-2F-1M-P + One M-J-36-F-M-P	36"	Black	MMH-3D-2C-1R-1L	\$40.80
Five MMH-36-2F-1M-P + One M-J-36-F-M-P	36"	Black	MMH-4D-3C-1R-1L	\$49.30
Six MMH-36-2F-1M-P + One M-J-36-F-M-P	36"	Black	MMH-5D-4C-1R-1L	\$57.80

